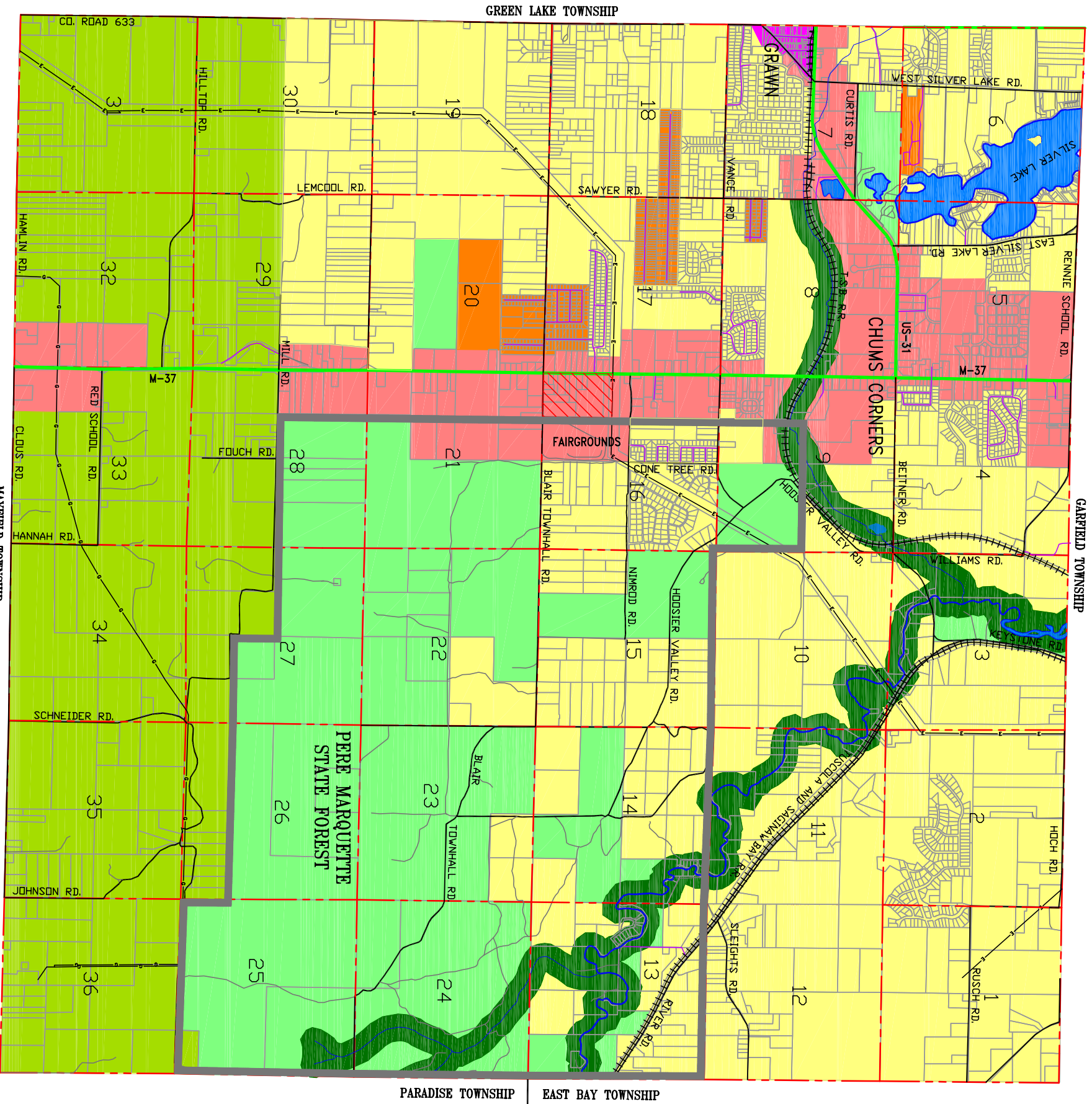


# ADOPTED ZONING

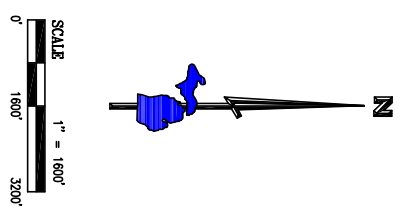
## BLAIR TOWNSHIP

### Grand Traverse County, Michigan



- #### FUTURE LAND USE LEGEND
- BV BOARDMAN VALLEY DISTRICT
  - RC RECREATION-CONSERVATION DISTRICT
  - AG AGRICULTURAL DISTRICT
  - RN RESIDENTIAL NEIGHBORHOOD
  - V VILLAGE OF BLACKWOOD DISTRICT
  - C/M COMMERCIAL/MANUFACTURING
  - MH MANUFACTURED HOME DISTRICT
  - IS INDUSTRIAL STORAGE OVERLAY

- #### GENERAL LEGEND
- PERE MARQUETTE STATE FOREST BOUNDARY
  - RIVERS & LAKES
  - HIGH-TENSION POWER LINE ROW
  - PIPELINES - OIL & GAS
  - TWO TRACK ROADS
  - MAJOR STREETS & RESIDENTIAL ROADS
  - COUNTY ROADS
  - STATE & FEDERAL HIGHWAY



**Gosling Czubak**  
 engineering sciences, inc.  
 Engineers • Surveyors  
 Planners  
 Environmental Services

1290 Business Park Drive  
 Traverse City, MI 49966-8807  
 231-946-9191  
 800-968-1082  
 Fax: 231-941-4603

Job No.: 2003490.04 Date: 12/13/2004 Revise: 04/28/2005

SOURCE: NATIONAL DEPARTMENT OF NATURAL RESOURCES  
 SOURCE: MISS OIL DIST. MAP, 1922